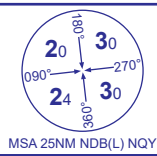


INSTRUMENT APPROACH CHART - ICAO

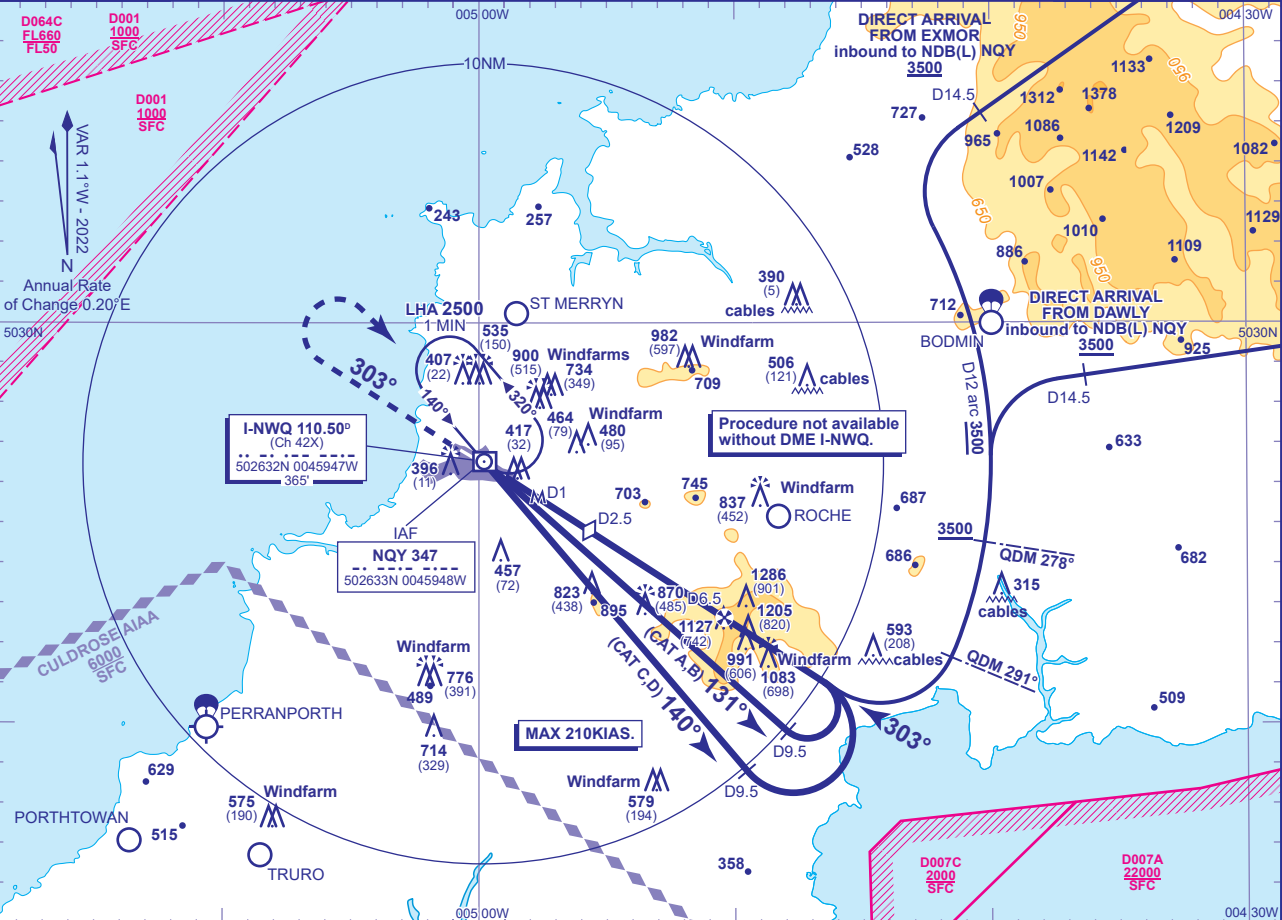
NEWQUAY  
NDB(L)/DME  
RWY 30  
(ACFT CAT A,B,C,D)



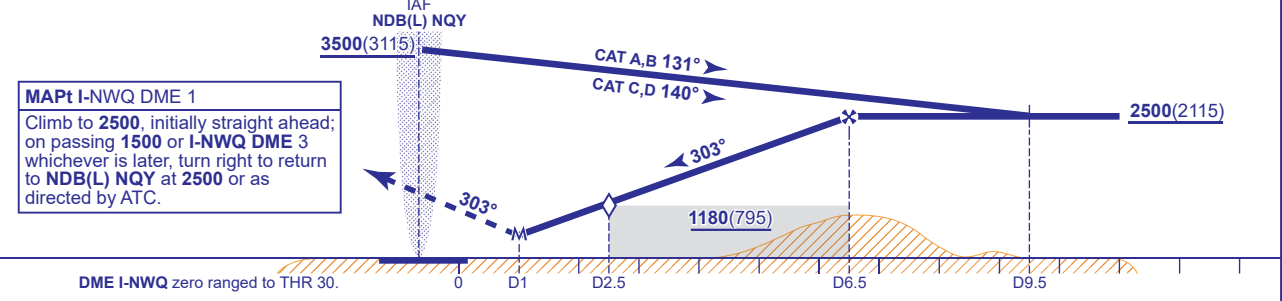
MSA 25NM NDB(L) NQY

APP	133.405	NEWQUAY APPROACH	AD ELEVATION	390
TWR	134.380	NEWQUAY TOWER	THR ELEVATION	385
RAD	127.930	NEWQUAY RADAR	OBSTACLE ELEVATION	1286 AMSL (901) (ABOVE THR)
ATIS	127.405	NEWQUAY INFORMATION	BEARINGS ARE MAGNETIC	

TRANSITION ALTITUDE	3000
---------------------	------



RECOMMENDED PROFILE Gradient 5.24%, 318FT/NM						
DME I-NWQ	6	5	4	3	2.5 (SDF)	2
ALT(HGT)	2350(1965)	2030(1645)	1710(1325)	1390(1005)	1230(845)	1070(685)



Aircraft Category		A	B	C	D	Rate of descent	G/S KT	160	140	120	100	80
OCA (OCH)	Procedure	1040(655)	1040(655)	1040(655)	1040(655)		FT/MIN	850	740	640	530	420
VM(C)OCA (OCH AAL)	Total Area	1040(650)	1200(810)	1330(940)	1330(940)							

NOTE ATC will normally require aircraft to hold no lower than 3500.

CHANGE (9/23): D001 ACTIVATED BY NOTAM.